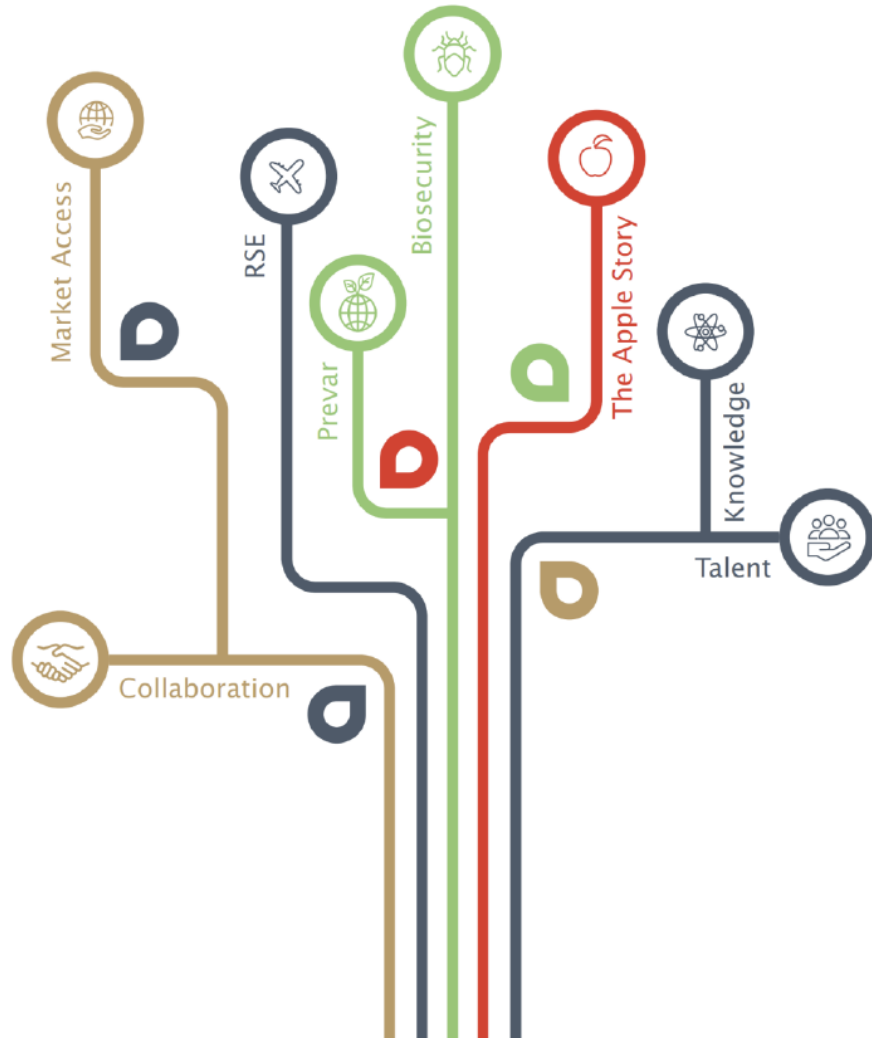


NZAPI Data Strategy

Rachel Kilmister
R&D Programme Manager



NZAPI's Data Strategy



Strategic priority - Knowledge

“Grow and improve the way NZAPI generates and provides information of value to the industry”

Not forgetting our #1 strategic priority

“Market access, market access, market access.....”

Workshops with members

Priorities for knowledge, communication & data

“Right information at the right time”

“Website is key”

“Decision support tools”

“Dashboards”

“Functionality”

“Integrate and link data”

“Data standards”

“Information is critical for members”

“Many stakeholders”

“Web apps”

“Mapping”

“Personalised content”

“Update systems and technologies”

“Alerts”

“Interactive”

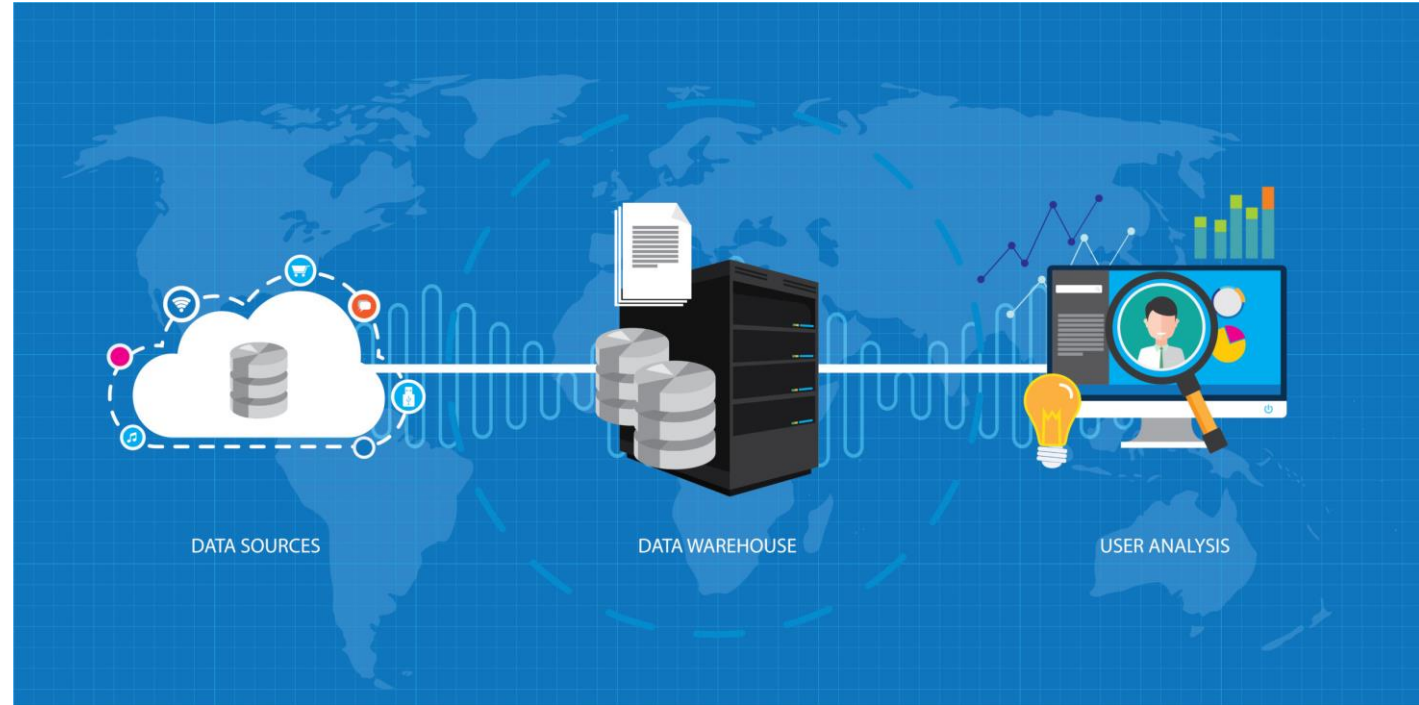
Key member priorities for data

❖ Data standards

- Sharing data between systems
 - Market Declaration System
 - Orchard Registration File
 - Spray diaries
 - Registration data
 - Mapping

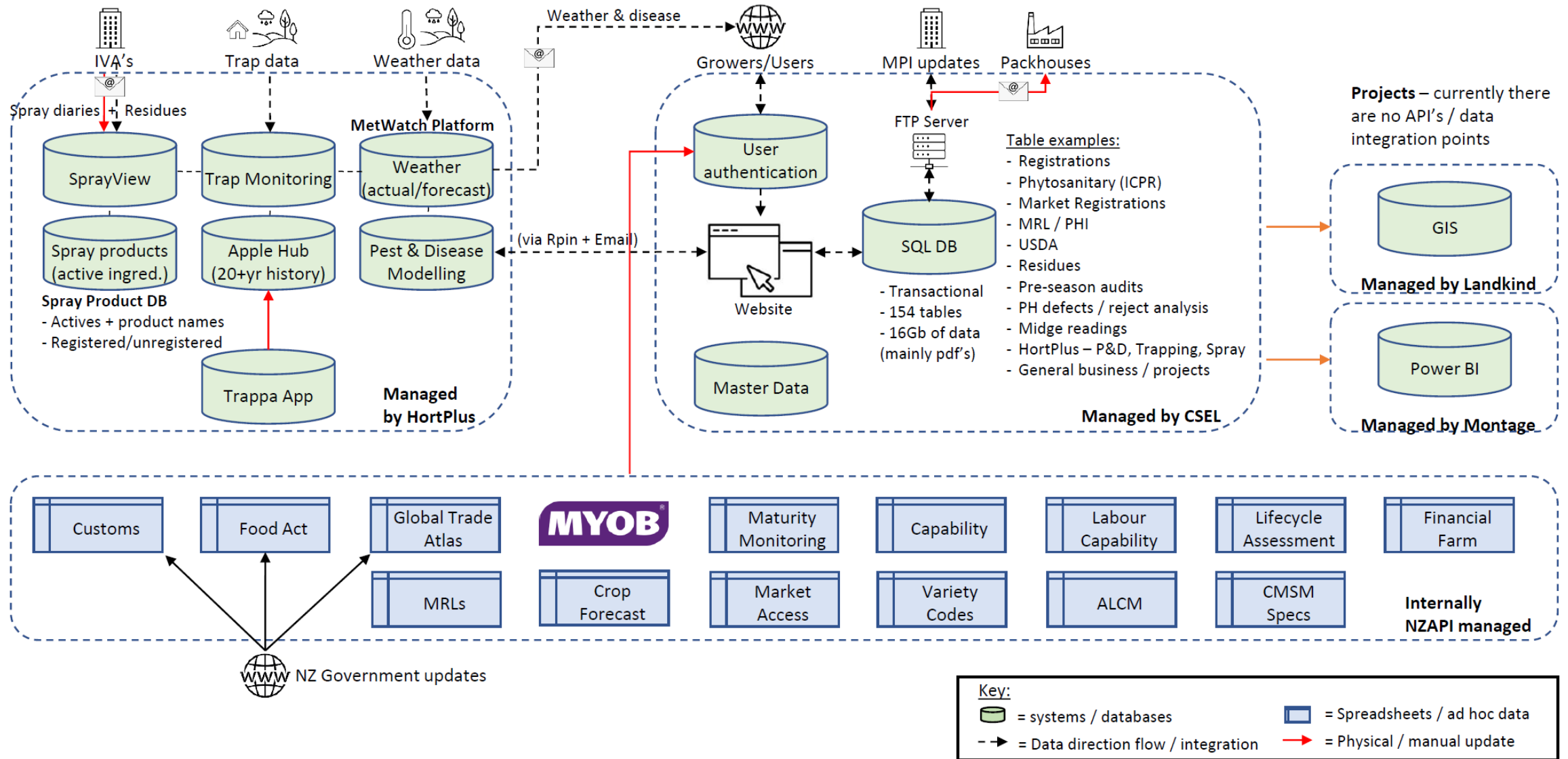
❖ Data warehouse

- Hold and store data to share and provide in formats that are useful
- Providing assurances
 - Residue reporting
 - Environmental data reporting
 - Agchem calculator
- Performance
 - Export, production, labour



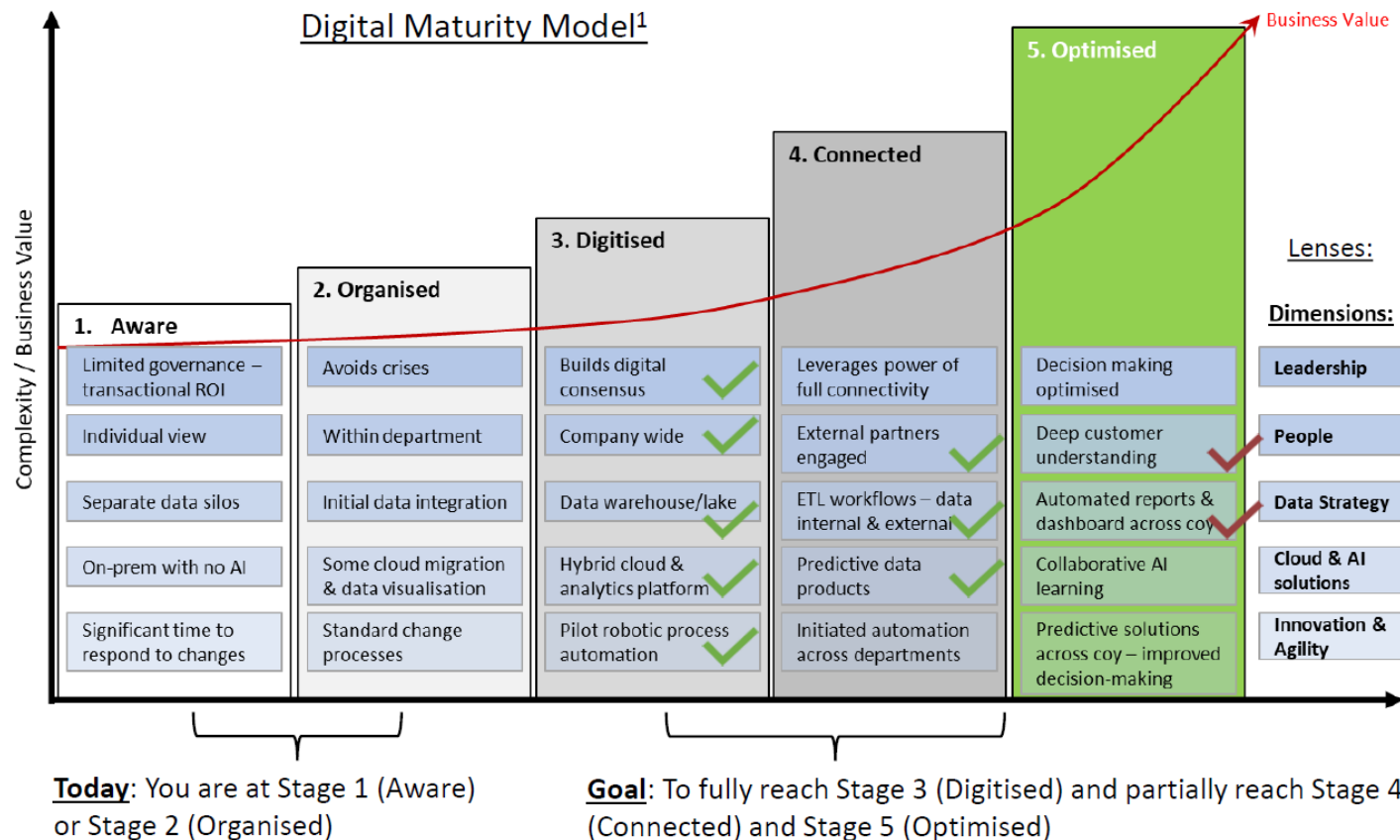
NZAPI already have a lot of data

Current data overview:



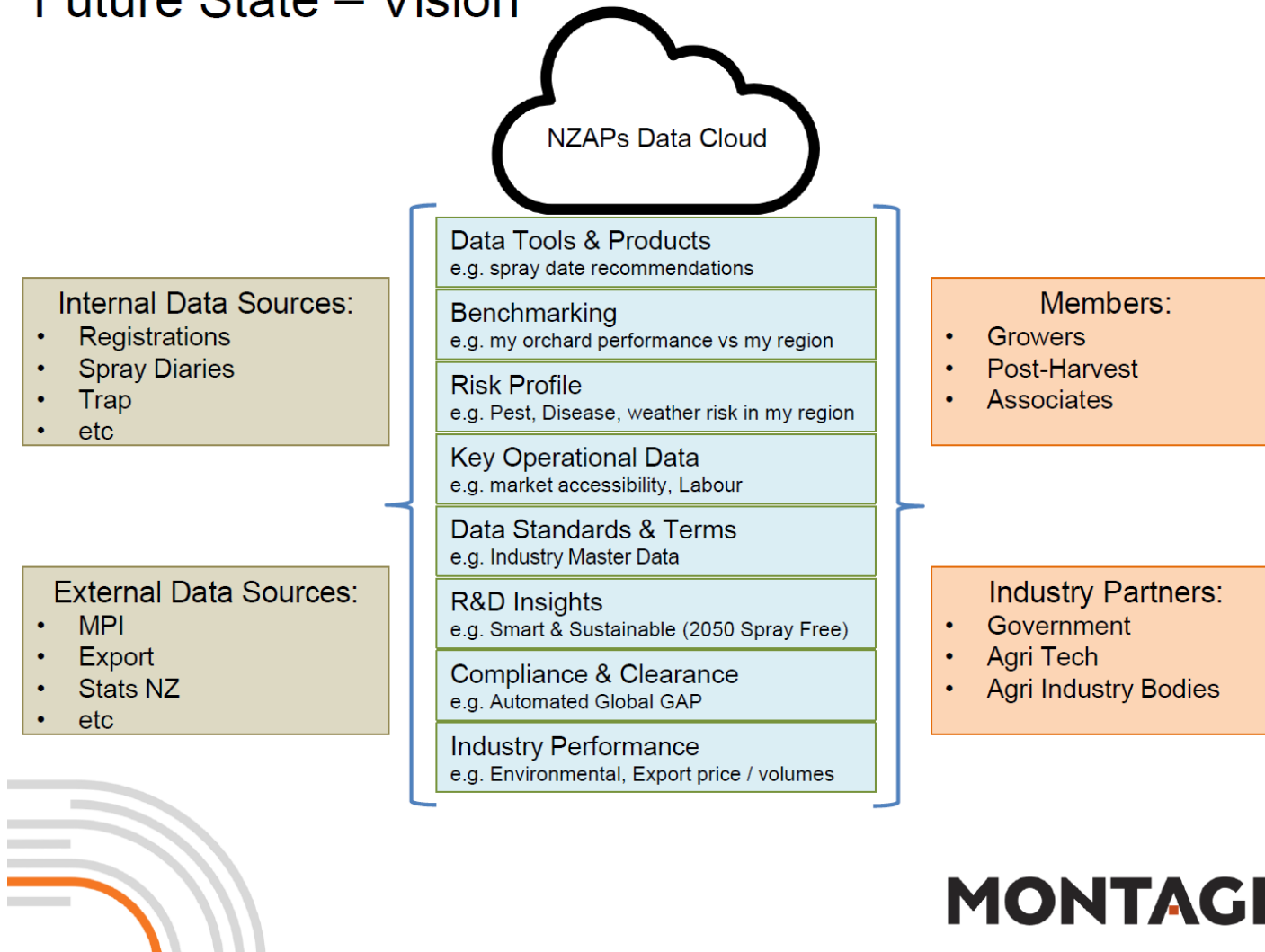
Starting the data journey

- How do we link and share data in a way that is efficient and adds value?



NZAPI's future vision

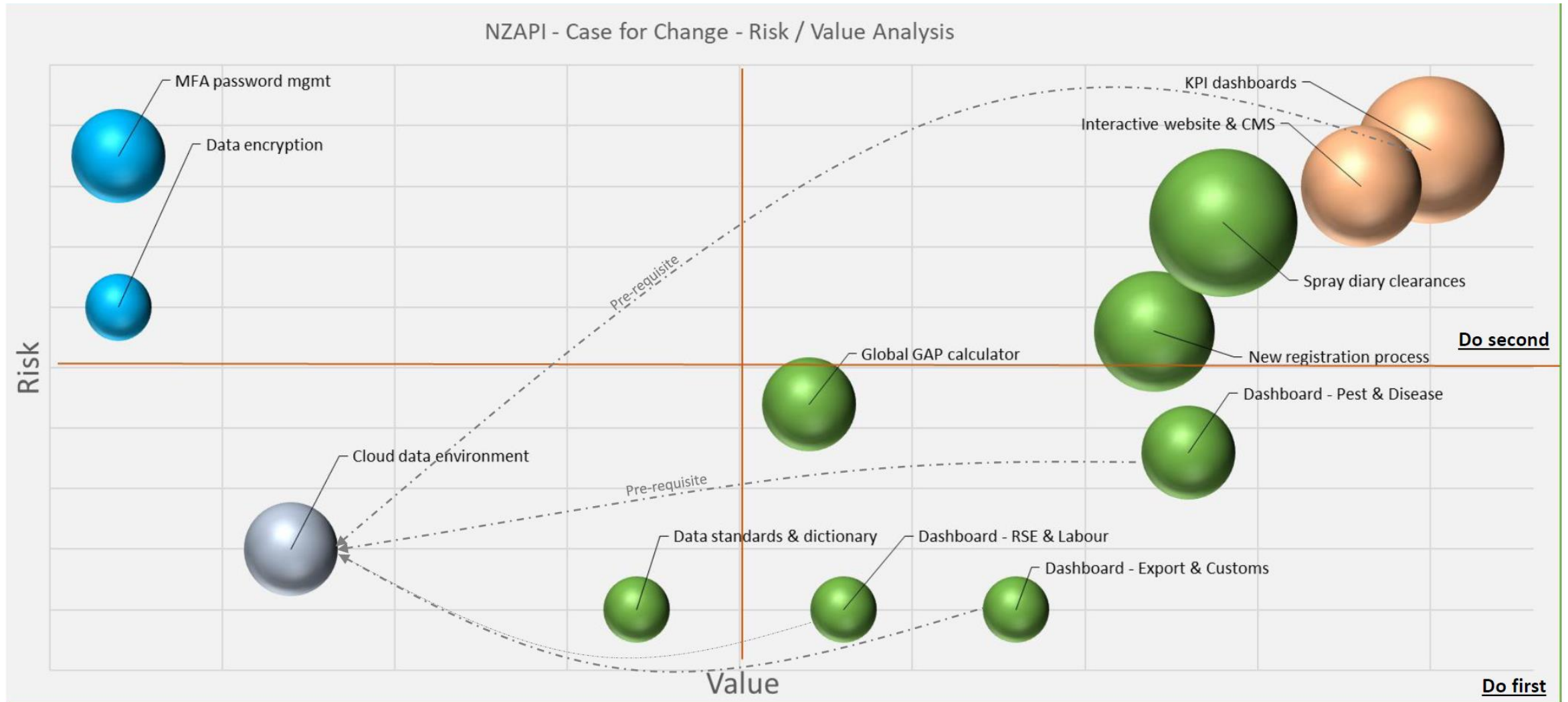
Future State – Vision



MONTAGE



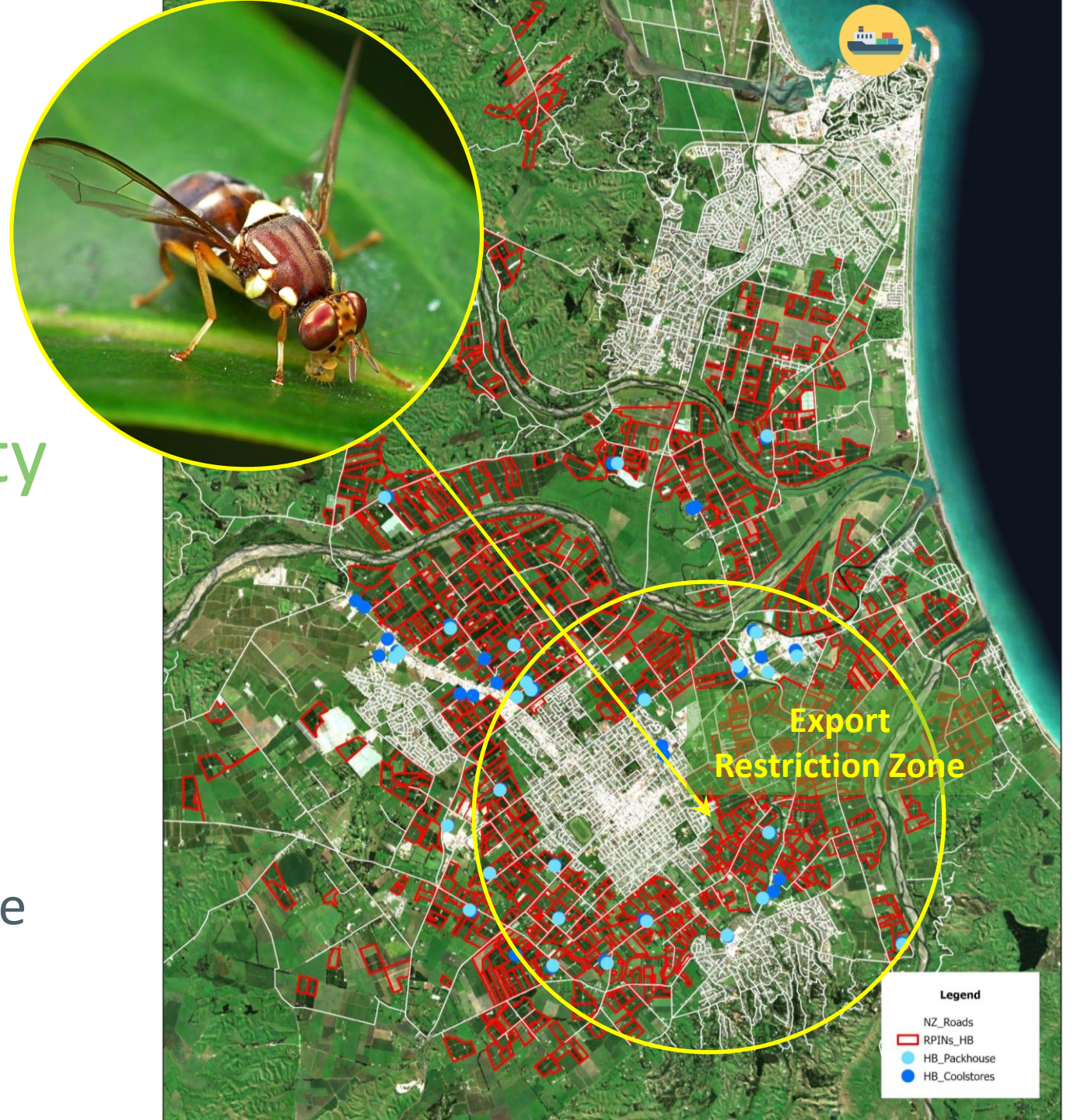
How do we get there?



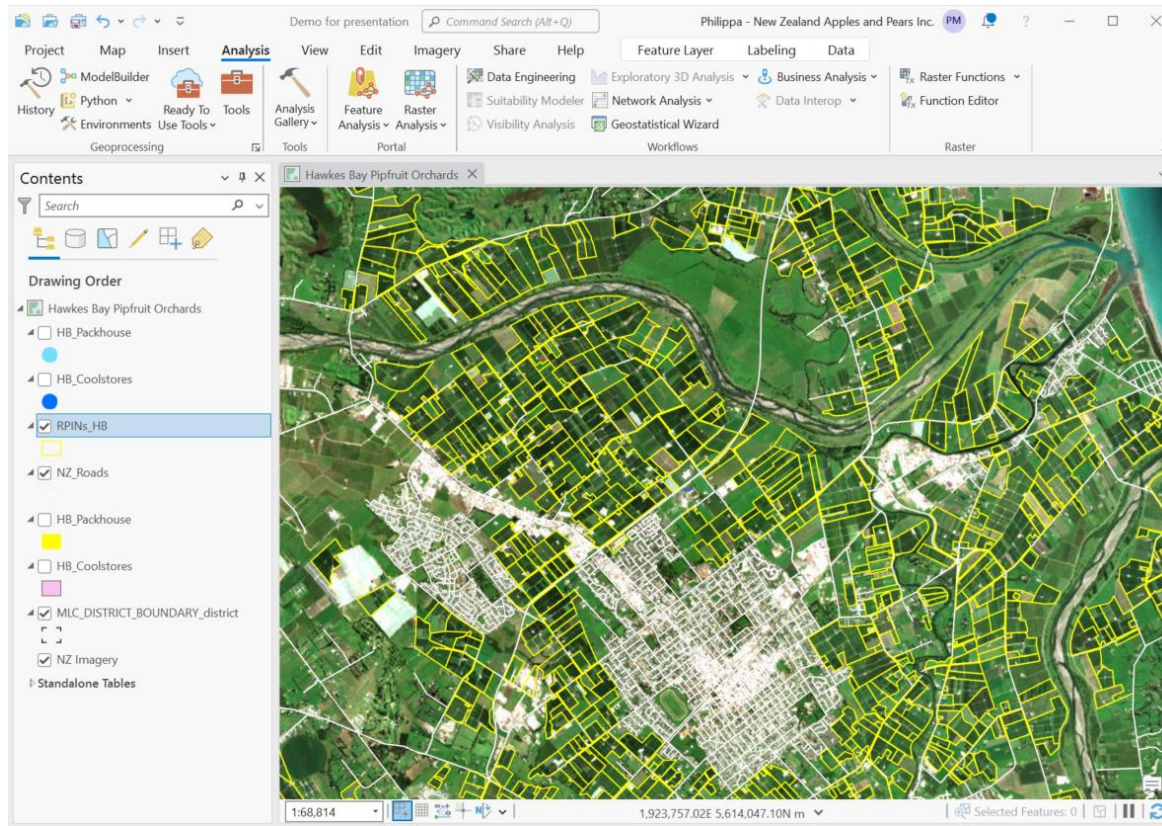
A data and tool example

Our GIS journey: mapping for biosecurity preparedness

- SFFF Biosecurity Project
- Industry maps are essential for managing a biosecurity response

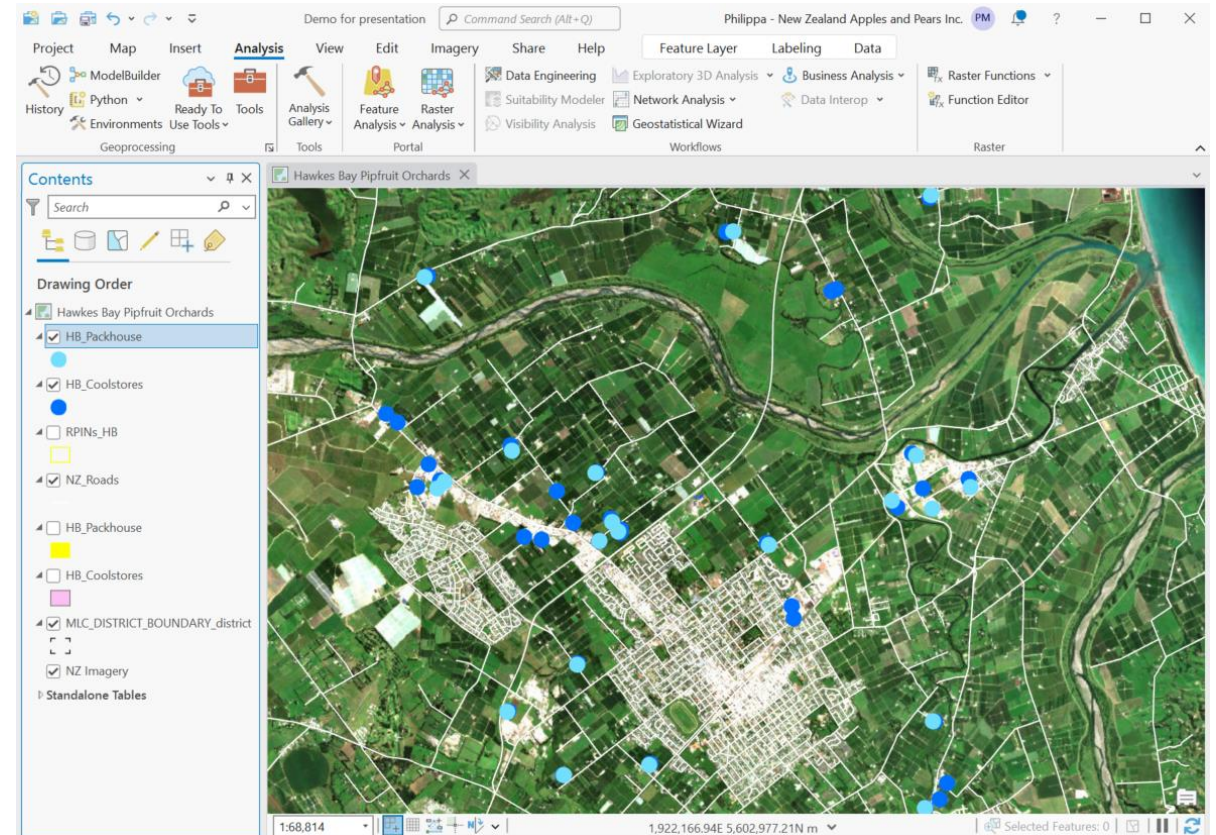


Creating a geospatial database



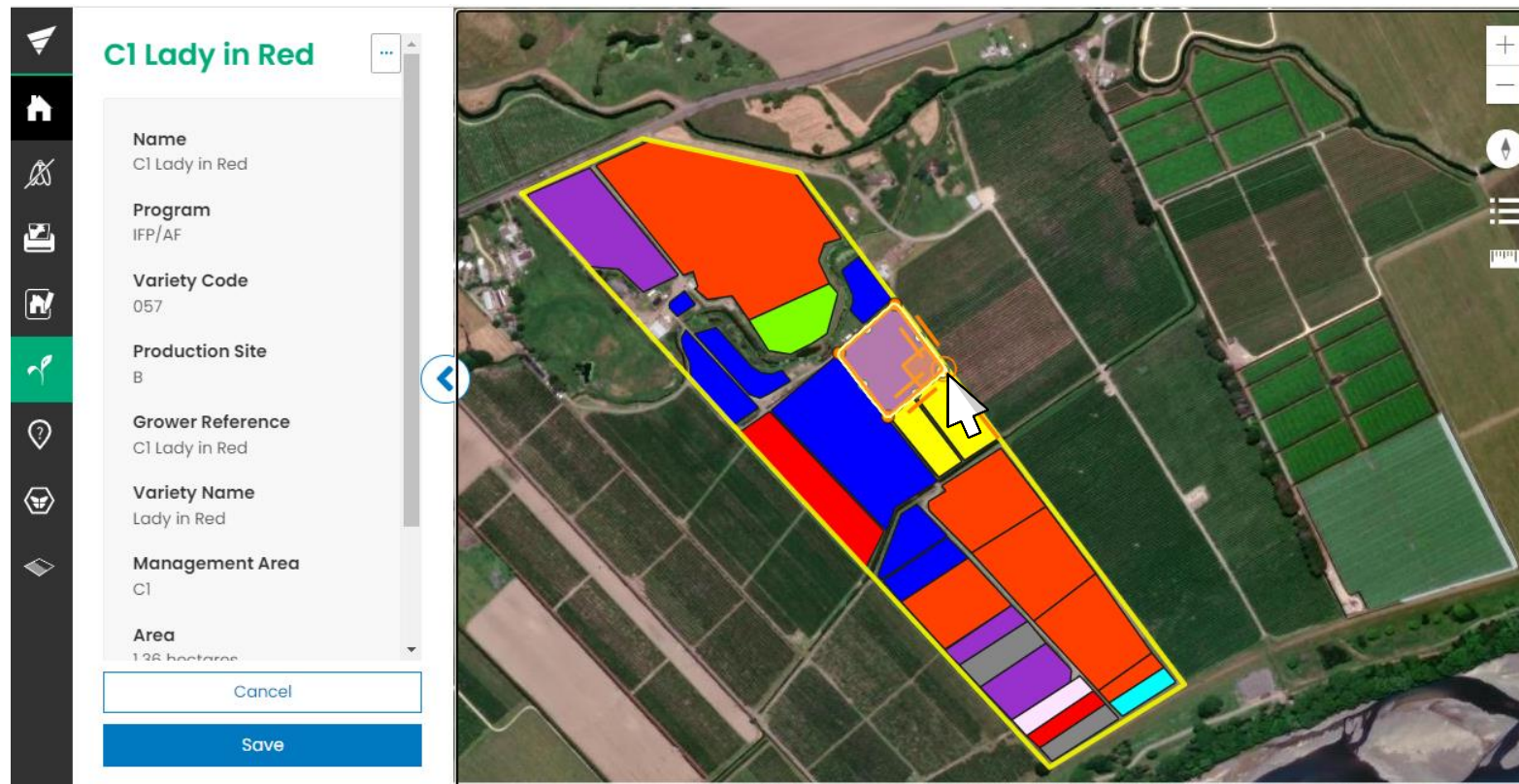
Orchards

Packhouses & coolstores

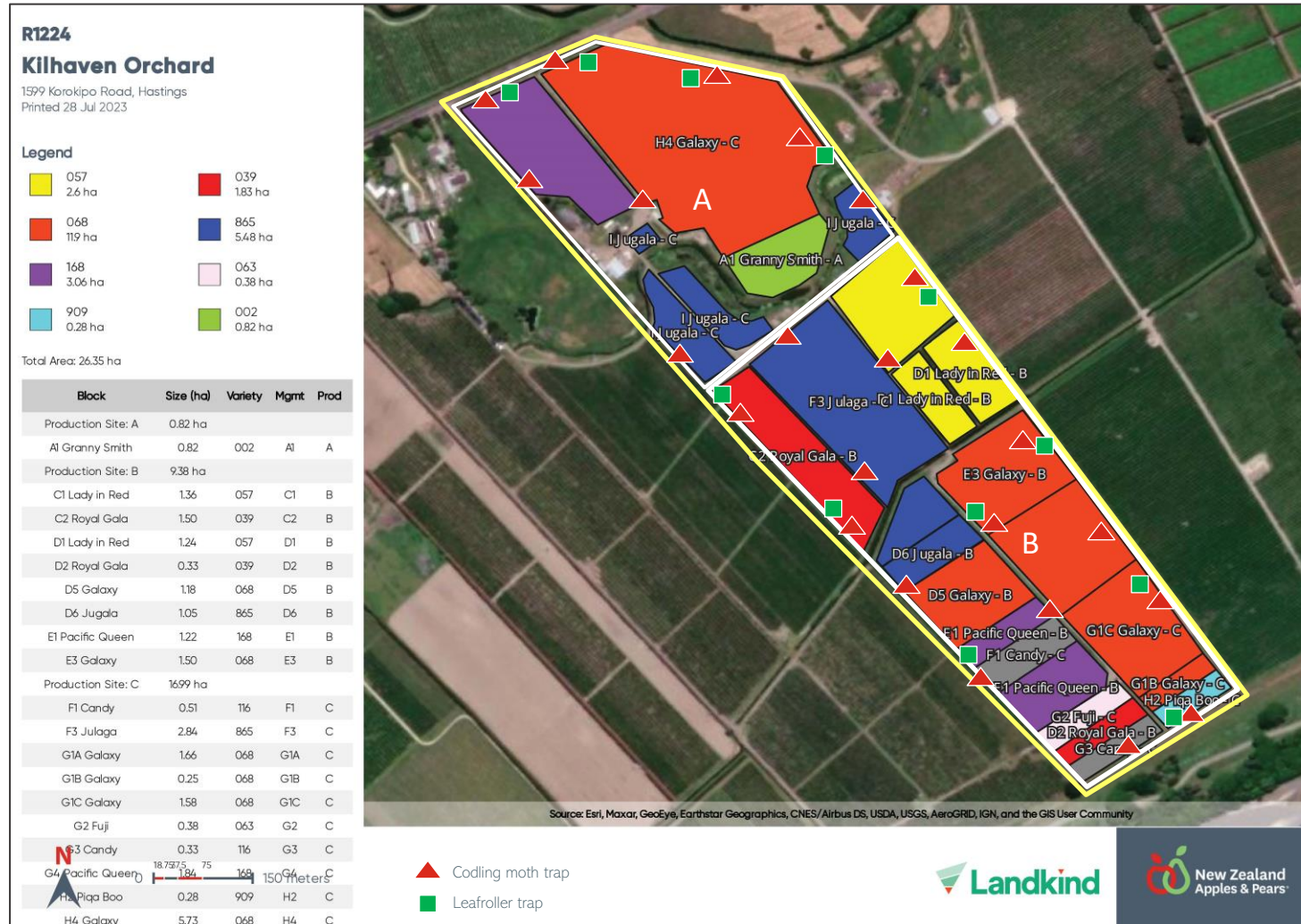


Keeping the database up to date

- A new industry mapping tool

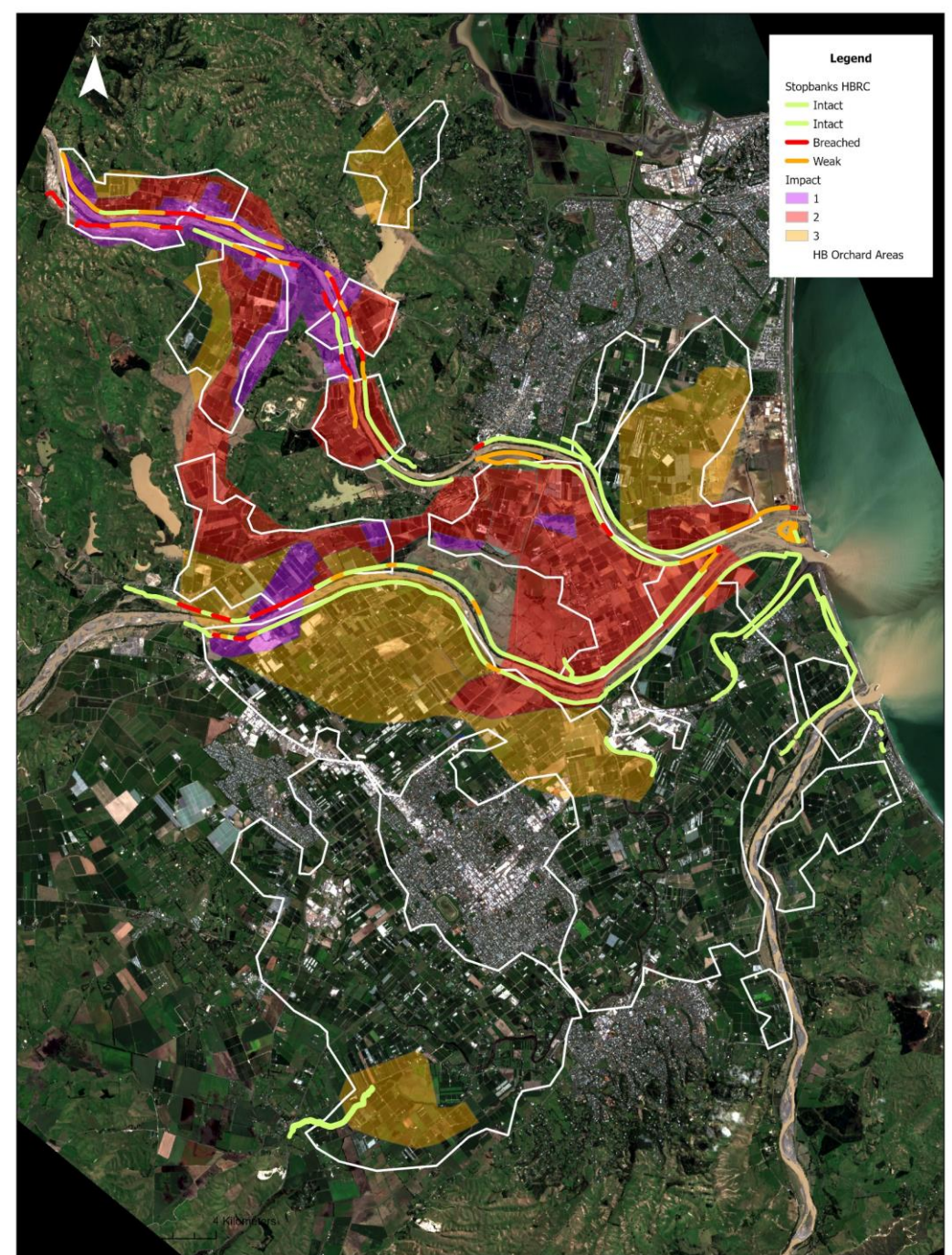
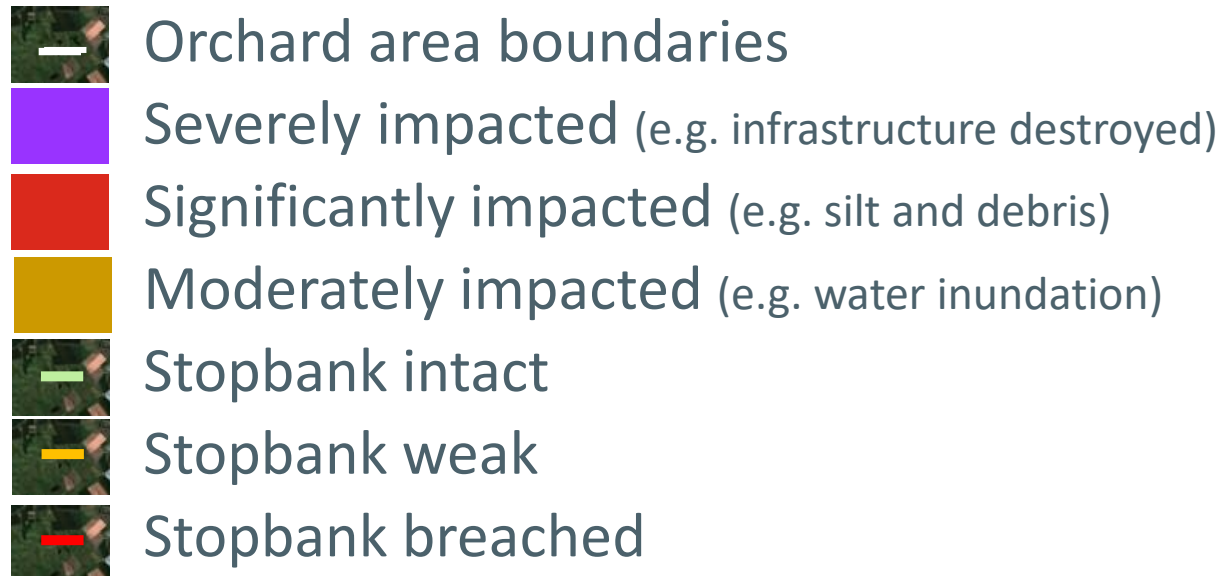


Mapping tool for assurances



Mapping in a response Cyclone Gabrielle

- Impact
- Crop forecast



Hawkes Bay Cyclone Gabrielle High Level Impact

Acknowledgement



Pip McVeagh

NZAPI Crop Protection Manager

Mapping and data guru

